

Requirements to become a Nematologist?

A Bachelor of Science degree in Zoology, Botany or Agriculture followed by a postgraduate degree (Masters or PhD) in one of these disciplines

- Nematology
- Plant Pathology
- Entomology
- Soil Microbiology

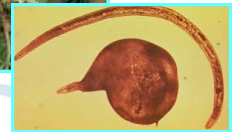
Are you . . . ?

- Inquisitive?
- Interested in Science?
- Methodical?
- Patient?
- Willing to conduct research for long hours?
- Solution oriented?

Make the choice to become a Nematologist

For further information contact
Ministry of Agriculture Fisheries & Mining
Research and Development Division
Plant Protection unit
Phone:(876) 983-2267 / 2281
Fax: (876) 983-2822
Email: ppu@moa.gov.jm

Nematology



What is Nematology ?

It is the scientific discipline concerned with the study of nematodes or roundworms.

What is a nematode?

A nematode is a roundworm. It is the most abundant multicellular organism on the planet. They range in size from 0.1mm (plant parasites) to over 1m (giant human roundworm) in length.

Nematode



Millions of nematodes live in the soil and water. Many of them are parasites of insects, plants and animals.



Internal nematode parasite of grasshopper



Plant parasitic nematode feeding on the root of a plant

Free-living nematodes are abundant and feed on bacteria, fungi, protozoa and other nematodes.



Predatory nematode feeding on a nematode

Many nematode species are beneficial to agriculture and the environment. Some are used in the biological control of insects and other pests, and others contribute to soil fertility by aiding in the cycling of nutrients in the soil.



Thousands of the entomopathogenic nematode *Steinernema carpocapsae* spilling out of a *Galleria* wax moth larva

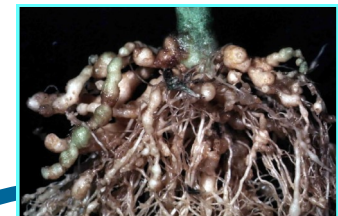
Who is a Nematologist?

A nematologist is someone who studies the anatomy, habitat and ecology of nematodes and the diseases they cause.

- In the field of agriculture a Nematologist is responsible for collecting and processing samples, identifying nematodes, diagnosing disease problems and making recommendations for pest management



Patchy growth of crop caused by plant parasitic nematode damage



Galls on tomato roots caused by the root knot nematode, *Meloidogyne* sp.