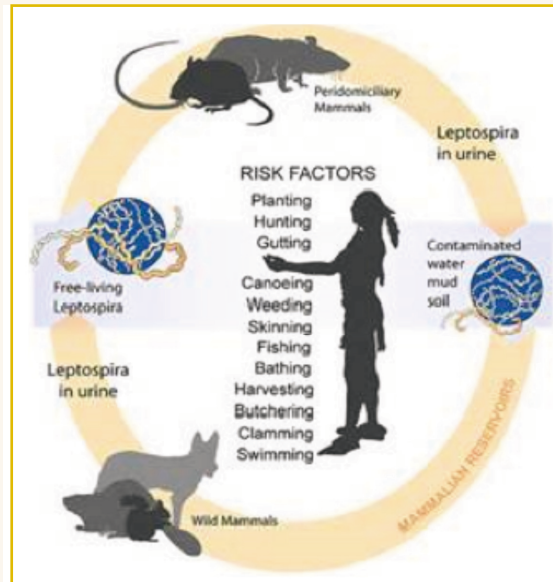


# VETERINARY SERVICES DIAGNOSTIC LABORATORY

Serological techniques used to detect leptospira antibodies in whole blood & serum include lateral flow (rapid), ELISA technology and microscopic agglutination. Urine and blood samples may be cultured upon request.



## MOLECULAR BIOLOGY

The laboratory unit provides diagnostic support to other areas of the VSDL through identification of pathogenic microbes, based on genetic fingerprint. Probe-specific hybridization and amplification techniques are used to detect and subtype Influenza Type A (porcine, avian & equine), American Foulbrood, Leptospirosis and foodborne pathogens (E. coli O157, Salmonella, Listeria monocytogenes among others).



Submitted samples include tissue specimen, swabs- bacterial or viral (cloacal and nasopharyngeal) in specific transport medium. Contact the VSDL for more details prior to submission.

Collaboration with vested stakeholders of various industries to provide diagnostic support using molecular techniques is also offered.

### OPENING HOURS:

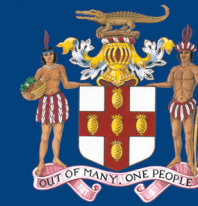
Monday to Thursday 8:30 am to 5:00 pm  
Friday 8:30 am to 4:00 pm

### SAMPLE RECEPTION HOURS:

Monday to Thursday 8:30 am. to 4:00 pm.  
Friday 8:30 am. to 3:00 pm.

FOR MORE INFORMATION PLEASE CONTACT US AT:

MINISTRY OF INDUSTRY, COMMERCE  
AGRICULTURE AND FISHERIES  
VETERINARY SERVICES DIVISION  
193 Old Hope Road  
Kingston 6, Jamaica  
Phone: (876) 977-2489/2492  
Fax: (876) 977-0885  
E-mail: [vetlab@moa.gov.jm](mailto:vetlab@moa.gov.jm)  
Web: <http://www.moa.gov.jm>



Ministry of Agriculture  
and Fisheries

VETERINARY SERVICES DIVISION

DIAGNOSTIC LABORATORY



Serology, Leptospirosis  
& Molecular Biology  
LABORATORY SUB-UNITS

# VETERINARY SERVICES DIAGNOSTIC LABORATORY

Our mission is to safeguard animal and human health by enhancing food safety through the provision of reputable veterinary analytical and diagnostic services.

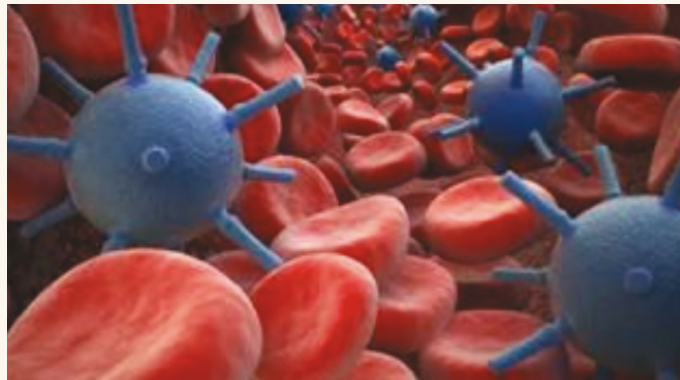
This is embodied in our vision to become a regional center of excellence offering veterinary analytical and diagnostic services of the highest quality to the agricultural and public health sectors.

In our drive to meet and exceed our customers' expectations, we aim to deliver credible results of high standards as embodied in our **QUALITY POLICY** which reaffirm our commitment to providing laboratory support to our clients to enhance animal health and food safety. In this pursuit of excellence, the employees of the VSDL strive to provide testing services of the highest quality in a professional manner seeking to fulfil the requirements set out in **ISO/IEC 17025:2005**

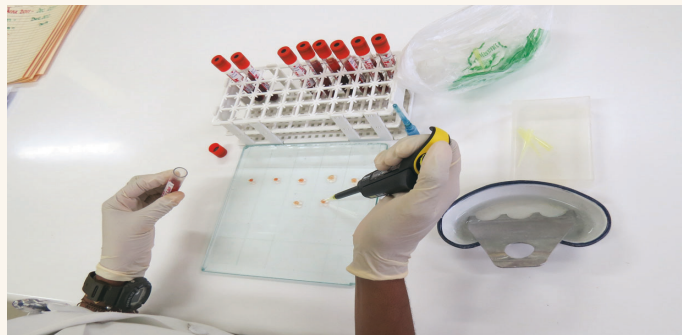


## SEROLOGY LABORATORY UNIT

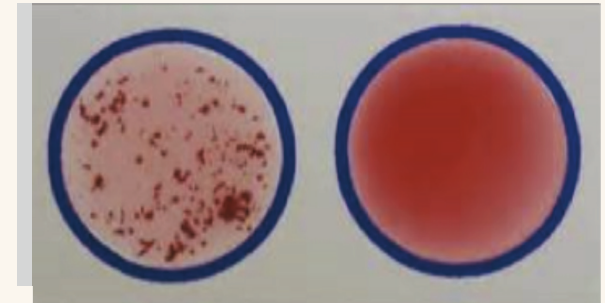
The unit is one of six subunits of the VSDL which provides diagnostic support to the various surveillance programmes undertaken by the Veterinary Services Division. The laboratory uses immunological assays to determine the health status of animals sampled under the various surveillance programmes of the Veterinary Services Division, which include Influenza (avian & swine), Brucellosis and Tuberculosis.



Serological testing for zoonotic and foreign animal diseases includes Caprine Arthritis Encephalitis, Bovine Viral Diarrhoea, including avian and porcine diagnostics for all sized industry stakeholders. Viral infection is detected by serological or molecular assays or referred for viral isolation.



The VSDL serological techniques to identify antibodies in the serum that are typically formed in response to an infection, against other foreign proteins, or to one's own proteins, include ELISA, agglutination, precipitation, and fluorescent antibodies.



Submitted samples are test dependent and may include whole blood (clotted), serum, raw milk, cloacal and nasopharyngeal swabs in viral transport medium. Contact the VSDL for more details prior to submission.

## LEPTOSPIROSIS

