

VETERINARY SERVICES DIAGNOSTIC LABORATORY

SEROLOGY

The laboratory unit uses immunological assays to determine the health of animals sampled under the various surveillance programmes of the Veterinary Services Division. Serological testing for animal diseases such as Brucellosis, Leptospirosis, Tuberculosis, Caprine Arthritis Encephalitis, Bovine Viral Diarrhoea, Avian and Swine Diagnostics are done upon request.



Viral infection is detected by serological or molecular assays or referred for viral isolation.



REFERRAL LABORATORIES

With our commitment to safeguard animal health and ensure safe foods, we partner with international Reference Laboratories with extended capacity and capability for analytical determination.



IATA certified VSDL personnel package and courier referral samples with requisite import permits and forms. Results are relayed through the VSDL to you the client; handling, lab and courier fees are billed to the client.

OPENING HOURS:

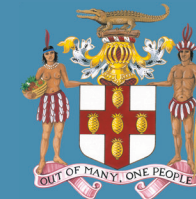
Monday to Thursday 8:30 am. to 5:00 pm.
Friday 8:30 am. to 4:00 pm.

SAMPLE RECEPTION HOURS:

Monday to Thursday 8:30 am. to 4:00 pm.
Friday 8:30 am. to 3:00 pm.

For More Information Please Contact Us At:

**MINISTRY OF INDUSTRY, COMMERCE
AGRICULTURE AND FISHERIES
VETERINARY SERVICES DIVISION**
193 Old Hope Road
Kingston 6, Jamaica
Phone: (876) 977-2489/2492
Fax: (876) 977-0885
E-mail: vetlab@moa.gov.jm
Web: <http://www.moa.gov.jm>



**Ministry of Agriculture
and Fisheries**

VETERINARY SERVICES DIVISION

*"Meeting and exceeding our customers'
needs & expectations"*



**Linton McDonnough
Memorial Veterinary Laboratory
since 1971**

VETERINARY SERVICES DIAGNOSTIC LABORATORY

Our mission is to safeguard animal and human health by enhancing food safety through the provision of reputable veterinary analytical and diagnostic services.

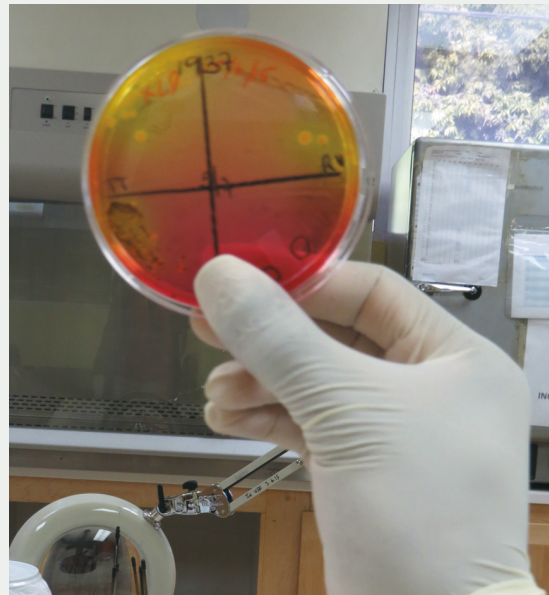
This is embodied in our vision to become a regional center of excellence offering veterinary analytical and diagnostic services of the highest quality to the agricultural and public health sectors.

In our drive to meet and exceed our customers' expectations, we aim to deliver credible results of high standards as embodied in our QUALITY POLICY which reaffirm our commitment to providing laboratory support to our clients to enhance animal health and food safety. In this pursuit of excellence, the employees of the VSDL strive to provide testing services of the highest quality in a professional manner seeking to fulfil the requirements set out in ISO/ IEC 17025:2005



BACTERIOLOGY & MYCOLOGY

This lab unit has a dynamic team of Veterinary Specialists, Medical Technologists and support staff dedicated to isolating & identifying bacterial and fungal microorganisms from a variety of sources including tissue specimen from all types of animals, aquaculture, mariculture and apiculture; products and by-products of animal origin.



RESIDUE & BIOCHEMICAL

The premier testing institution in the marine Caribbean region for pesticides, heavy metals, biotoxins, phytoplankton and veterinary drug residues analyses in foods of animal origin.

PARASITOLOGY

The Parasitology lab unit is responsible for the detection and identification of external & internal parasites from a variety of domestic and wild animal species. Specimen may include feces, blood, skin scrapings and tissues collected from live animals and animals at necropsy.



MOLECULAR BIOLOGY

The laboratory unit provides diagnostic support to other areas of the VSDL through identification of pathogenic microbes, based on genetic fingerprint. Molecular techniques are used to detect Influenza Type A (porcine, avian & equine), American Foulbrood, Leptospirosis and foodborne pathogens (E. coli O157, Salmonella, Listeria monocytogenes among others).

